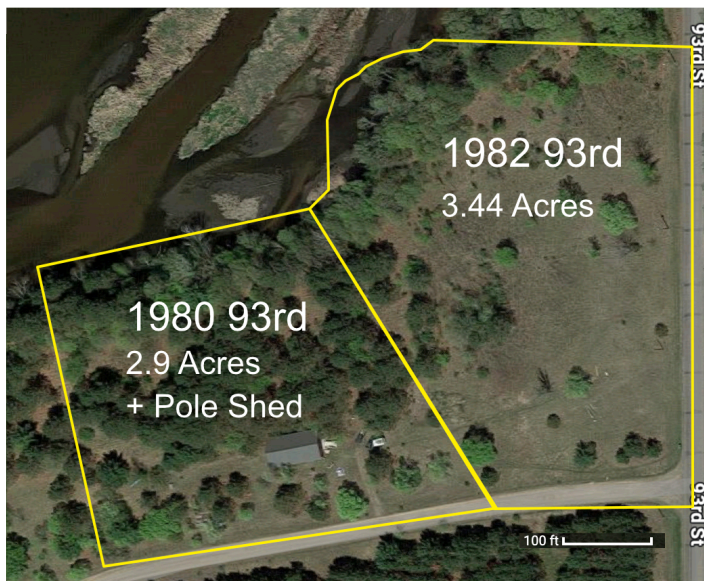


## Apple River Waterfront

# 6+ Acres, 550+ ft Riverfront

1980 + 1982 93rd St, Somerset WI 54025



Lot lines, acreage and river frontage measured using St Croix County GIS; double-check all measurements yourself

More info at  
[www.Maximpulse.com](http://www.Maximpulse.com)

Maxim Hurwicz  
 Cell: 952-334-6603  
 email: [maximpulse@gmail.com](mailto:maximpulse@gmail.com)

Over 550 ft of peaceful river frontage on the upper Apple River (no tubers!). Gorgeous 6.34 acres (two lots) with huge pole shed. Mix of mature trees, open pasture on organic land...great for horses, gardening and building your dream home. Enjoy fishing, canoeing, boating, abundant wildlife and more.

- Rare, large waterfront building site
- Convenient to the Twin Cities... 14 minutes to Stillwater Bridge... 6 minutes from WI-35
- 28 x 56 x 12 pole shed with south-facing windows, 2 patio doors, 10' garage door, in-floor heat plumbed, and full concrete floor
- No covenants, corner lot, high ground (no flooding)

\$280,000 for 1980 93rd;

\$230,000 for 1982 93rd

\$485,000 (for both lots, inc. pole shed)